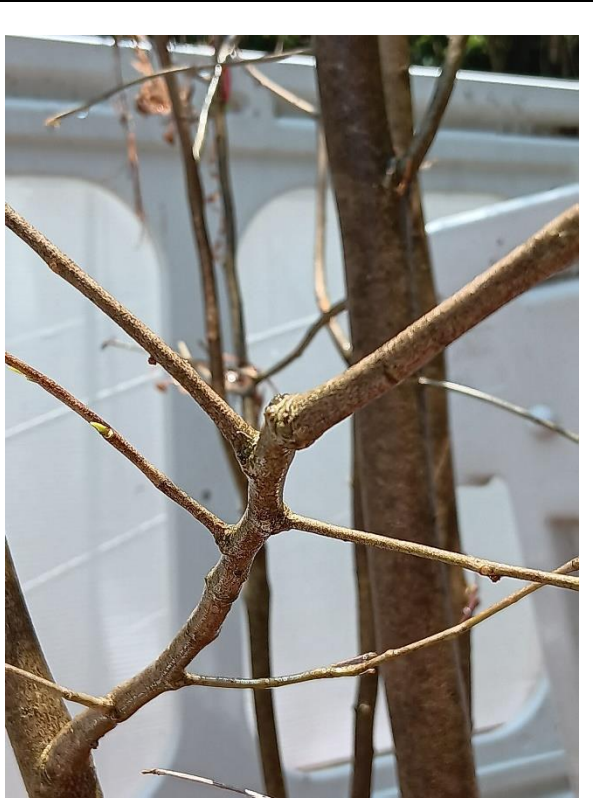




A8



A8



A8

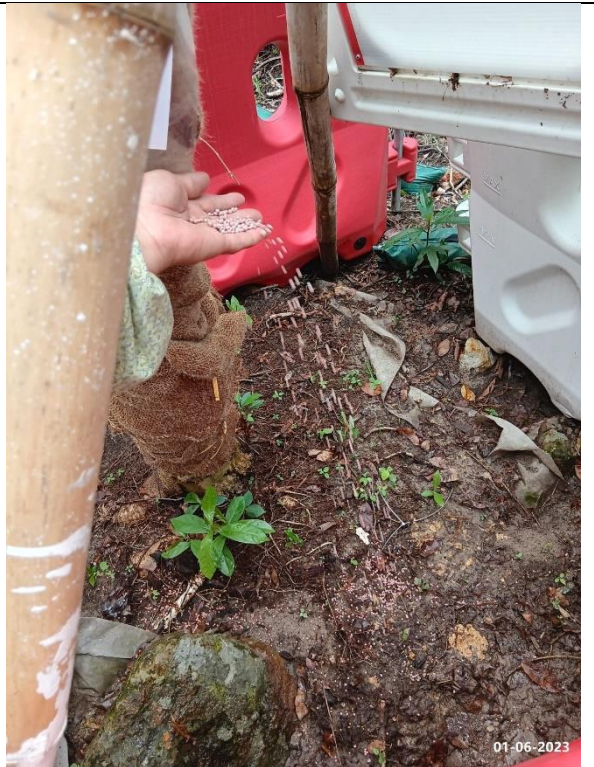


A8





A8



A8



A9



A10





A11



A12

## Tree Schedule for Survey of Plant Species of Conservation Importance

No.	Species		Conservation Status	Measurements			Tree Condition (Good(G) / Average(A) / Poor(P))			Recommendation (Retain / Transplant / Remove)	Findings	Remark
	Scientific Name	Chinese name		DBH (mm)	Height (m)	Crown (m)	Form	Health	Structure			
<b>Site 1</b>												
A8	<i>Aquilaria sinensis</i>	土沉香	RPPHK; Cap.586; IUCN:VU	110	5	4	P	P	P	Transplant	Poor health The tree is recommended to be fertilized once and watered every day (except on rainy days).	No construction work nearby and fenced off by plastic barrier
<b>Site 3</b>												
A9	<i>Aquilaria sinensis</i>	土沉香	RPPHK; Cap.586; IUCN:VU	190	7	3	A	A	A	Retain	No Particular Observation	In native woods, no construction works nearby
A10	<i>Aquilaria sinensis</i>	土沉香	RPPHK; Cap.586; IUCN:VU	280	12	6	A	A	A	Retain	No Particular Observation	In native woods, no construction works nearby
A11	<i>Aquilaria sinensis</i>	土沉香	RPPHK; Cap.586; IUCN:VU	330	12	6	A	A	A	Retain	No Particular Observation	In native woods, no construction works nearby
<b>Site 4</b>												
A12	<i>Aquilaria sinensis</i>	土沉香	RPPHK; Cap.586; IUCN:VU	100	5	3	A	G	A	Transplant	No Particular Observation	No construction work nearby and fenced off by plastic barrier

\*Note:

DBH refers to Trunk Diameter at Breast Height

The Tree preservation work commenced in Jul 2022

RPPHK - Species included in AFCD publication "Rare and Precious Plants of Hong Kong (2003)"

Cap.586 – Native plants listed in Protection of Endangered Species of Animals and Plants

Ordinance, Cap. 586.

IUCN:VU – "Vulnerable" under IUCN Red List of Threatened Species