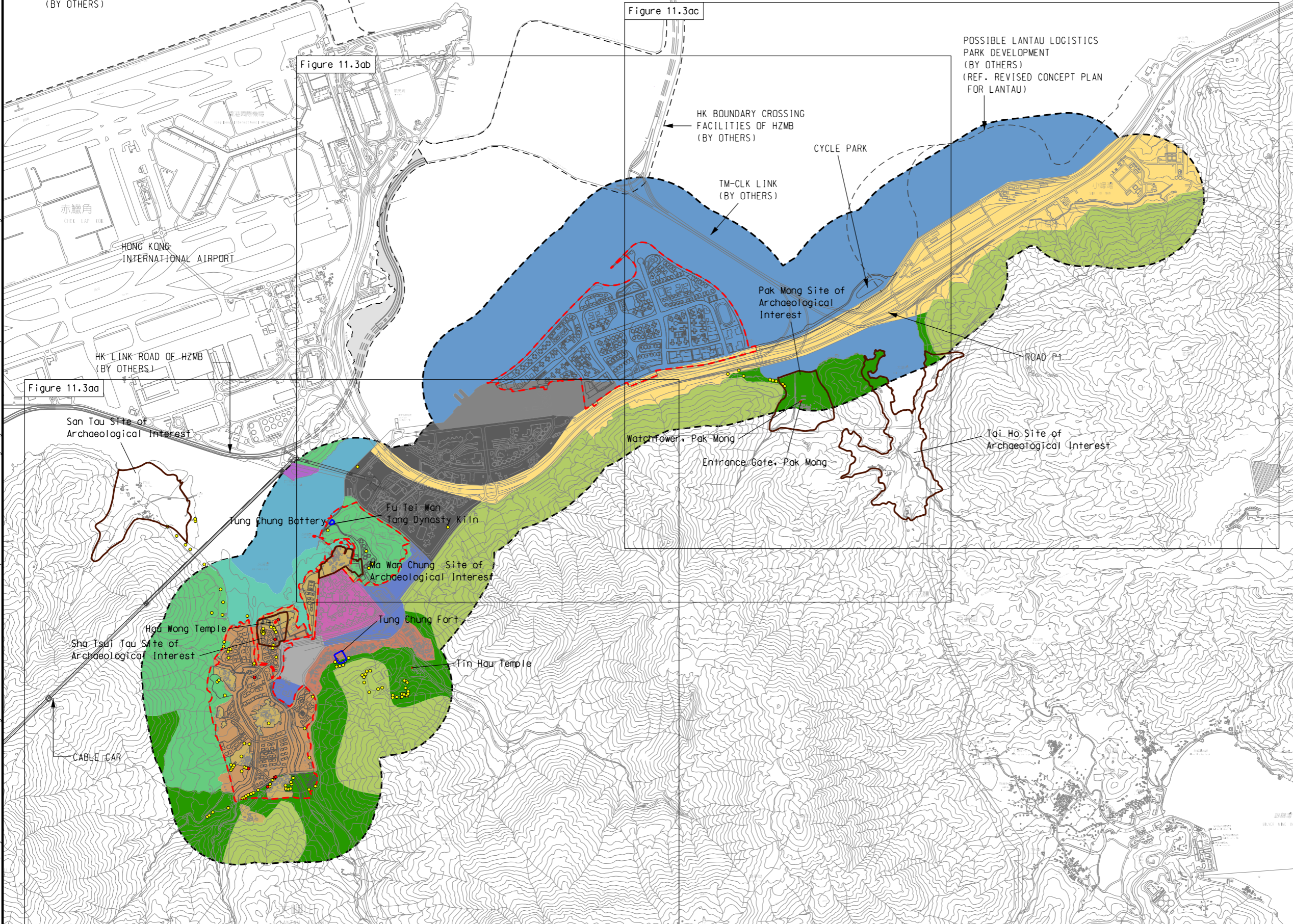


DO NOT SCALE DRAWING. CHECK ALL DIMENSIONS ON-SITE.
ALL RIGHTS RESERVED.
© OVE ARUP & PARTNERS HONG KONG LIMITED.

PROPOSED EXPANSION OF
HONG KONG INTERNATIONAL AIRPORT
(BY OTHERS)

Printed by : 11/9/2015
Filename : G:\env\project\219844-70\13 Drawing Deliverables\24 Environmental Impact Assessment working Figure 11.3a - Landscape Character Areas Plan.dgn



- LEGEND**
- POSSIBLE DEVELOPMENT AREA
 - 500M ASSESSMENT AREA (LIA)
 - WORK AREA FOR SERVICE RESERVOIR
 - SITES OF ARCHAEOLOGICAL INTEREST
 - DECLARED MONUMENTS
 - HISTORIC BUILDINGS
- LANDSCAPE CHARACTER AREAS (LCA)**
TOTAL AREA OF LCA WITHIN THE STUDY AREA SHOWN IN HECTARES (HA) BELOW
- PLANTS OF RARE AND PROTECTED SPECIES
 - POTENTIALLY REGISTRABLE OVTs
- | | | |
|------|--|--|
| 1. | | INSHORE WATER LANDSCAPE AREA (476.7ha) |
| 2. | | STRAIT LANDSCAPE AREA (51.2ha) |
| 3. | | INTER-TIDAL COAST LANDSCAPE AREA (25.8ha) |
| 4. | | COASTAL UPLAND AND HILLSIDE LANDSCAPE AREA (112.3HA) |
| 5. | | SETTLED VALLEY LANDSCAPE AREA (135.8ha) |
| 6. | | UPLAND HILLSIDE LANDSCAPE AREA (272.8ha) |
| 7a. | | RECLAMATION/ ONGOING MAJOR DEVELOPMENT LANDSCAPE (32.8ha) |
| 7b. | | ONGOING MAJOR DEVELOPMENT LANDSCAPE (9.7ha) |
| 8. | | TRANSPORTATION CORRIDOR LANDSCAPE AREA (177.6ha) |
| 9. | | MIXED MODERN COMPREHENSIVE URBAN DEVELOPMENT LANDSCAPE AREA (87.7ha) |
| 10a. | | URBAN PERIPHERAL VILLAGE LANDSCAPE AREA (25.6ha) |
| 10b. | | MISCELLANEOUS RURAL FRINGE LANDSCAPE AREA (66.9ha) |
| 10c. | | RURAL TOWNSHIP LANDSCAPE AREA (14.4ha) |
| 11. | | AIRPORT LANDSCAPE AREA (2.2ha) |
| 12. | | INSTITUTIONAL LANDSCAPE AREA (20.5ha) |
| 13. | | RESIDENTIAL URBAN LANDSCAPE AREA (19.3ha) |

C	THIRD ISSUE	GL	09/15
B	SECOND ISSUE	GL	08/15
A	FIRST ISSUE	GL	06/15
Rev	Description	By	Date

Consultant

ARUP

Project title

Tung Chung New Town Extension

Drawing title

Landscape Character Areas Plan

Drawing no. Rev. C

Drawn	Date	Checked	Approved
GL	09/15	LK	FC
Scale	1:30000 @A3		Status
			PRELIMINARY

COPYRIGHT RESERVED

土木工程拓展署
 Civil Engineering and
 Development Department

