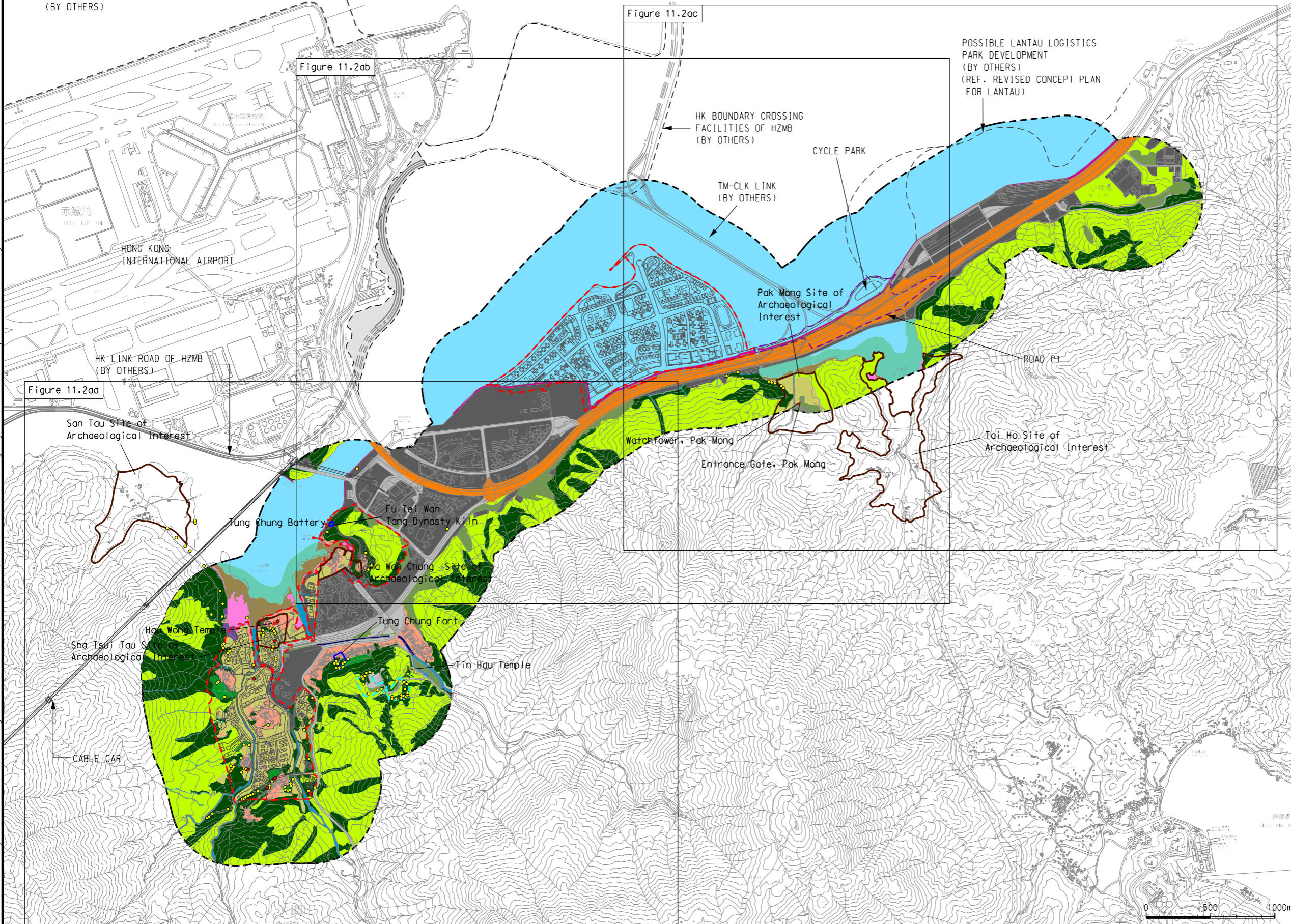


DO NOT SCALE DRAWING. CHECK ALL DIMENSIONS ON-SITE.
ALL RIGHTS RESERVED.
© OVE ARUP & PARTNERS HONG KONG LIMITED.

PROPOSED EXPANSION OF
HONG KONG INTERNATIONAL AIRPORT
(BY OTHERS)

Printed by : 11/9/2015
Filename : G:\env\project\219844-70\13 Drawing Deliverables\24 Environmental Impact Assessment working Figure 11.2a - Landscape Resources Plan.dgn



- LEGEND**
- POSSIBLE DEVELOPMENT AREA
 - 500M ASSESSMENT AREA (LIA)
 - WORK AREA FOR SERVICE RESERVOIR
 - SITES OF ARCHAEOLOGICAL INTEREST
 - DECLARED MONUMENTS
 - HISTORIC BUILDINGS

- LANDSCAPE RESOURCES (LR)**
TOTAL AREA OF LR WITHIN THE STUDY AREA SHOWN IN HECTARES (HA) BELOW
- PLANTS OF RARE AND PROTECTED SPECIES
 - POTENTIALLY REGISTRABLE OVTs
 - 1. SECONDARY WOODLAND (191ha)
 - 2. SHRUBLAND AND GRASSLAND (337.8ha)
 - 3. TRANSITIONAL WATERS (28.8ha)
 - 4. COASTAL WATERS (505.8ha)
 - 5. NATURAL STREAMS AND RIVERS
 - 5b. CHANNELIZED WATERCOURSE
 - 6. MUDFLAT (14.2ha)
 - 6b. ROCKY SHORE (0.5ha)
 - 7. ROAD AND URBAN INFRASTRUCTURE (48ha)
 - 7b. MAJOR TRANSPORT CORRIDOR (72.1ha)
 - 8. VILLAGE TYPE DEVELOPMENT (28.5ha)
 - 9. URBANISED DEVELOPMENT (192ha)
 - 10. AGRICULTURAL LAND (54ha)
 - 11. PLANTATION (28.8ha)
 - 12. FUNG SHUI WOODLAND (6.03ha)
 - 13. MANGROVE (5.6ha)
 - 14. REEDBED (1.1ha)
 - 15. ARTIFICIAL SEAWALL (8.2ha)

C	THIRD ISSUE	GL	09/15
B	SECOND ISSUE	GL	08/15
A	FIRST ISSUE	GL	06/15
Rev	Description	By	Date

Consultant		ARUP	
Project title			
Tung Chung New Town Extension			
Drawing title			
Landscape Resources Plan			
Drawing no.		Rev.	
Figure 11.2a		C	
Drawn	Date	Checked	Approved
GL	09/15	LK	FC
Scale	Status		
1:30000 @A3	PRELIMINARY		

COPYRIGHT RESERVED

土木工程拓展署
Civil Engineering and
Development Department

* NOTE: PLEASE REFER TO FIGURES 11.2ad TO 11.2ai FOR SUBCATEGORIES OF LR1, LR2 & LR10

