

TCW-WQM1 Downstream of Tung Chung Stream (reference station)



Water quality monitoring equipment at TCW-WQM1



Overview of monitoring station TCW-WQM1

TCW-WQM2 Middle of Tung Chung Stream (West)



Water quality monitoring equipment at TCW-WQM2

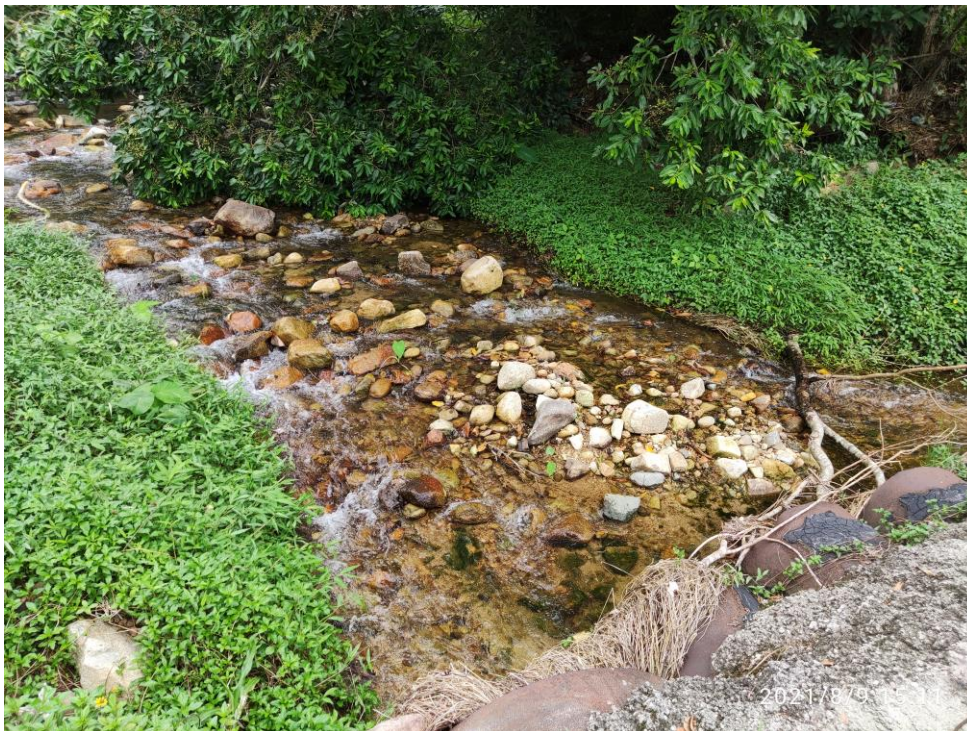


Overview of monitoring station TCW-WQM2

**TCW-WQM3A Middle of Tung Chung Stream (East)
[aka Upstream of River Park]**



Water quality monitoring equipment at TCW-WQM3A



Overview of monitoring station TCW-WQM3A

TCW-WQM4 Upstream of Tung Chung Stream (West)



Water quality monitoring equipment at TCW-WQM4



Overview of monitoring station TCW-WQM4

TCW-WQM5A Upstream of Tung Chung Stream (East)

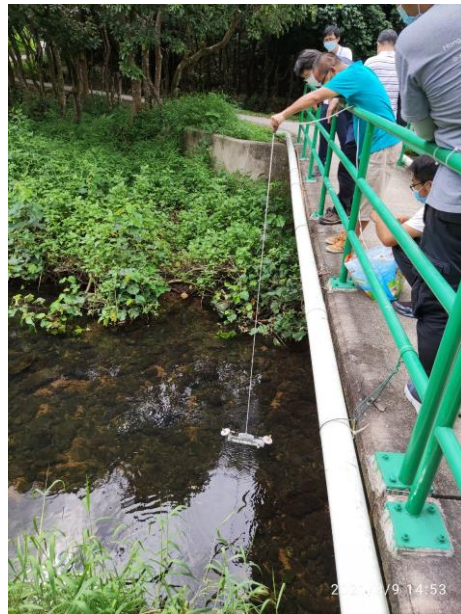
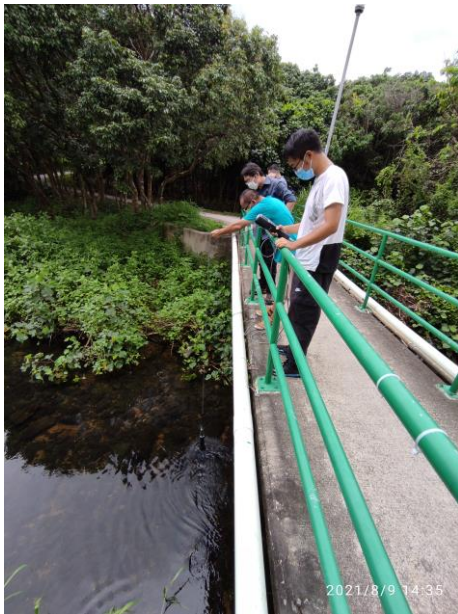


Water quality monitoring equipment at TCW-WQM5A

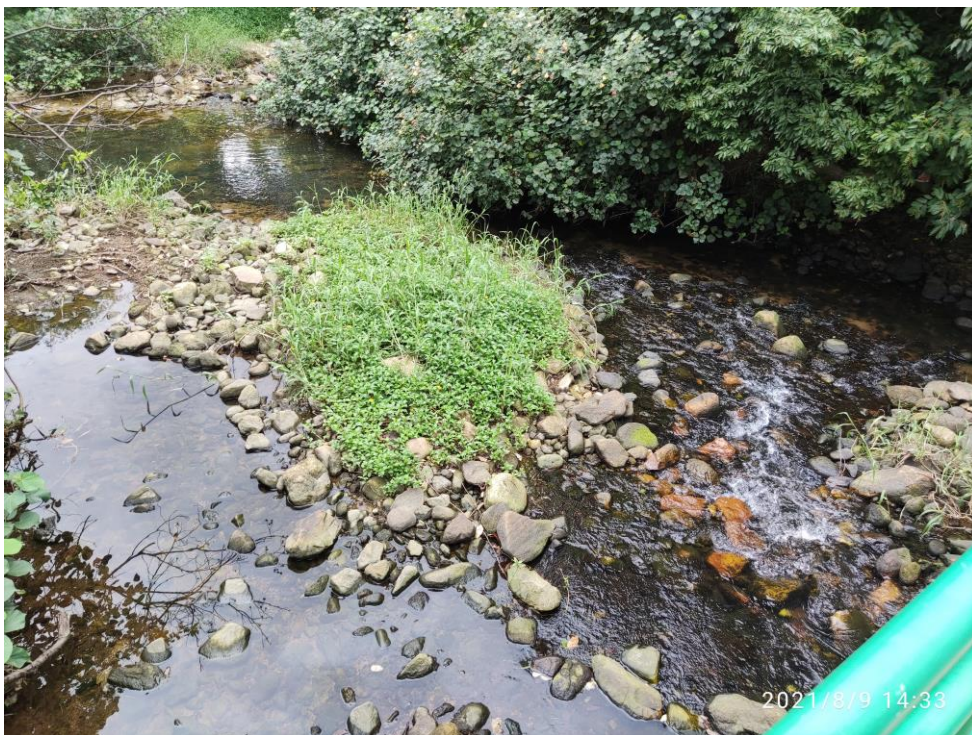


Overview of monitoring station TCW-WQM5A

TCW-WQM6 Downstream of Tung Chung Stream (West)

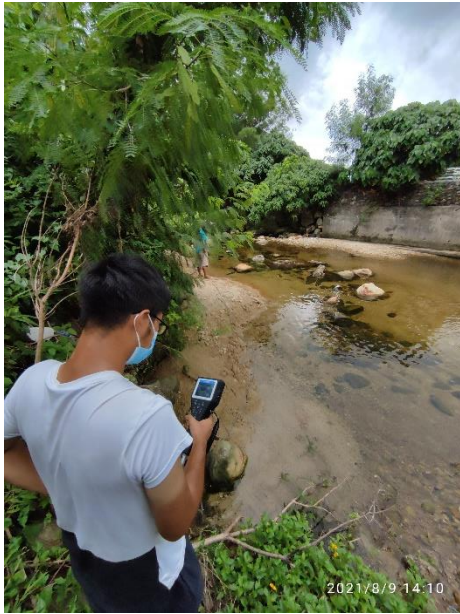


Water quality monitoring equipment at TCW-WQM6



Overview of monitoring station TCW-WQM6

**TCW-WQM7A Downstream of Tung Chung Stream (East)
[aka Downstream stream of River Park]**



Water quality monitoring equipment at TCW-WQM7A



Overview of monitoring station TCW-WQM7A